

An aerial view of a busy port at sunset. In the foreground, a large stack of colorful shipping containers (blue, orange, grey, green) is visible on a ship's deck. In the background, several large gantry cranes are positioned along the pier. The sky is filled with soft, golden light from the setting sun, and the water reflects the light. The overall scene conveys a sense of industrial activity and global trade.

portbase[®]

The world of logistics
is changing

The key to this transformation is not new equipment but new ways of handling data:

Knowing where hundreds of millions of things are and where they are going, and being able to act on that data as things change.

- The Economist, April 2018

**We see 3 driving forces for
smart data management & solutions**

Integrating all aspects of the journey

Port logistics is one of the most complex logistic processes in the world.

Because of the large number of companies, people and actions involved, communication, governance and collaboration based on real-time data is essential.

- The Economist, April 2018

Open data platforms for co-creation

80% of the goods we use every day are shipped. That opens up many possibilities.

Platforms like Uber, WeChat and Worldbank, allow data sharing in a transparent way and enable new innovations by co-creation with their community.

- Techcrunch, January 2018

Total visibility of the supply chain

Ports are part of a global movement in which transparency and integrated total solutions are the standard.

Global platforms offer end-to-end visibility to counteract delays, unpredictability and fraud in logistics.

- Forbes, August 2018

The answer to these forces is a unique combination of our trusted foundation for co-creation and connectivity

Meet Portbase:

Neutral logistic data platform with national coverage providing a stable backbone and operational excellence in the Dutch ports

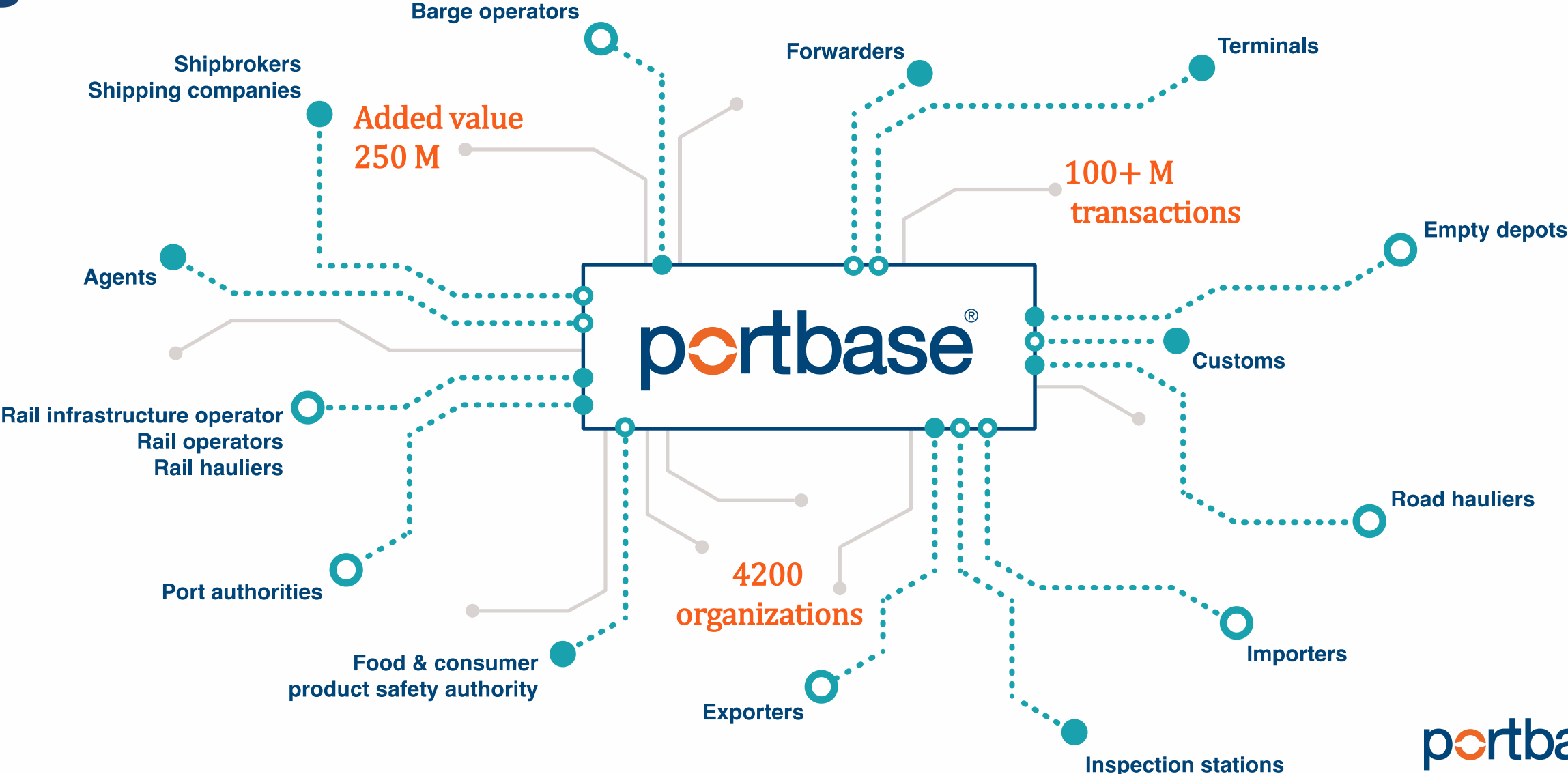
- National Port Community System since 2002
- Shareholders: Port of Rotterdam 75%, Port of Amsterdam 25%
- Supervisory Board and Advisory Council
- Neutral & non-profit, public utility
- Available 24/7

Trusted
Foundation

World class
reliability of
the Port
Community
System



Connecting businesses and governments



Unlocking the potential of existing data

Enabler of co-creation

Dynamic Portbase co-creation platform



portbase®

Connecting global trade



datahub for
global platforms

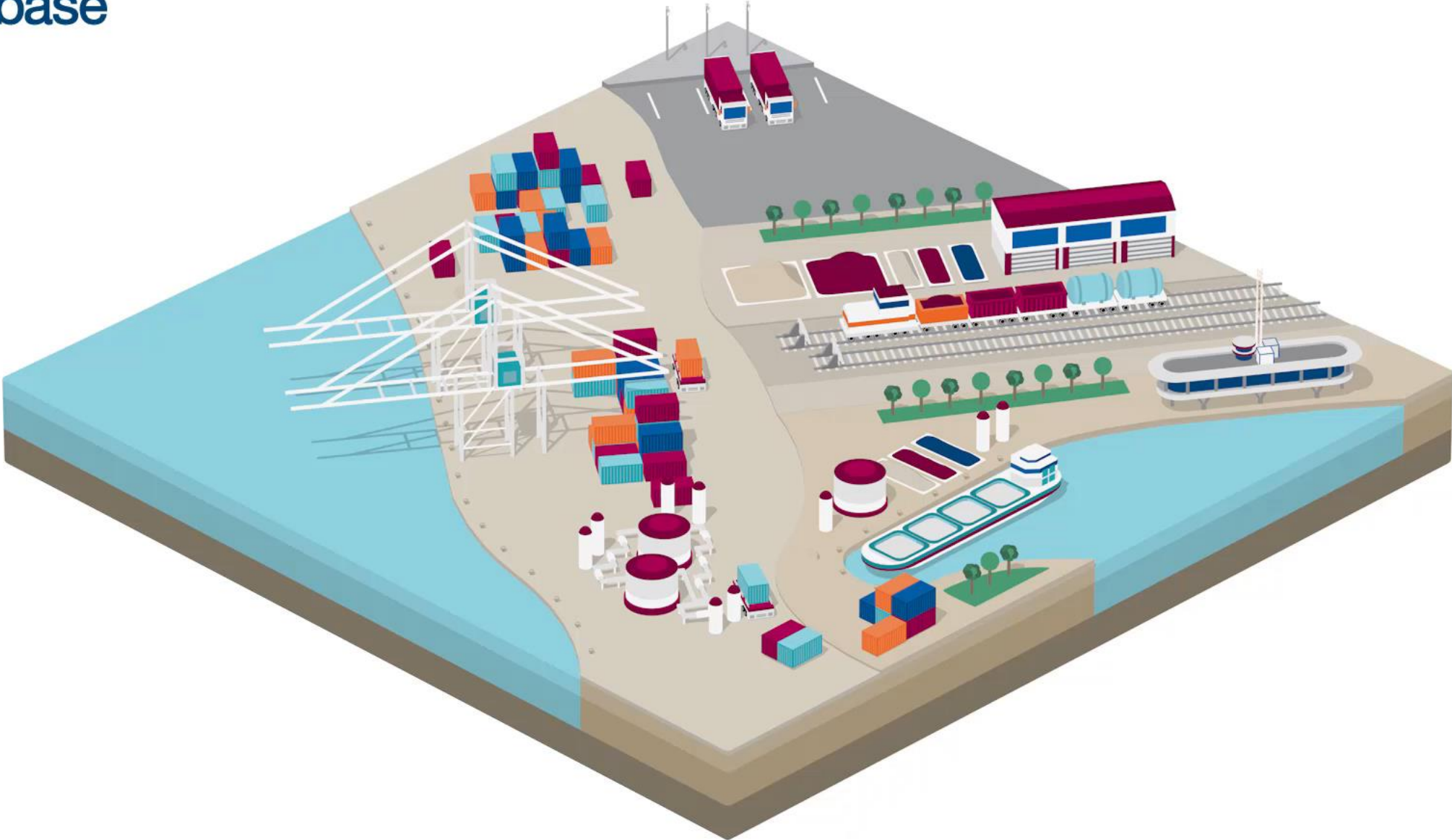
Worldwide
connectivity



portbase®

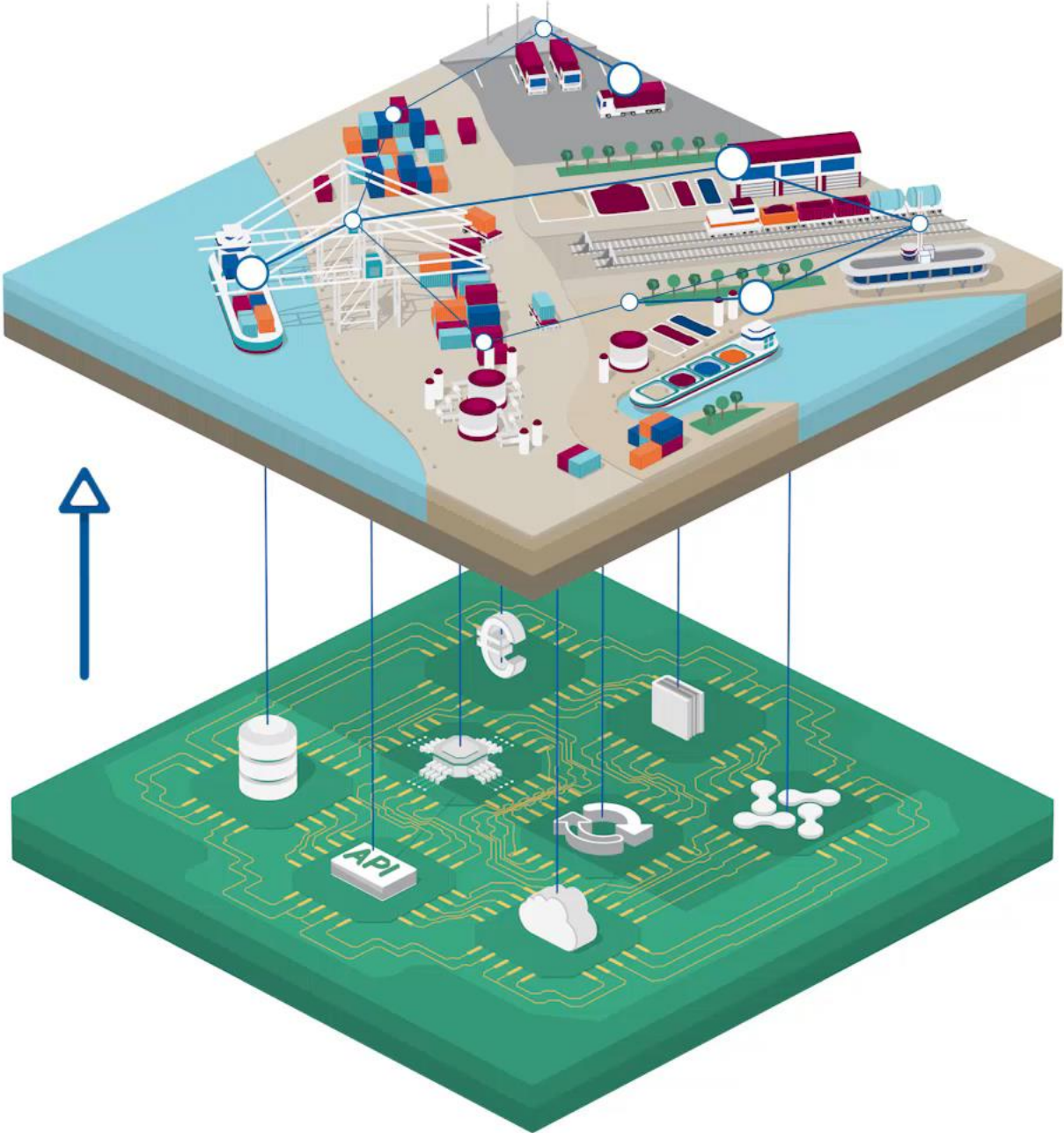
**Global
players**

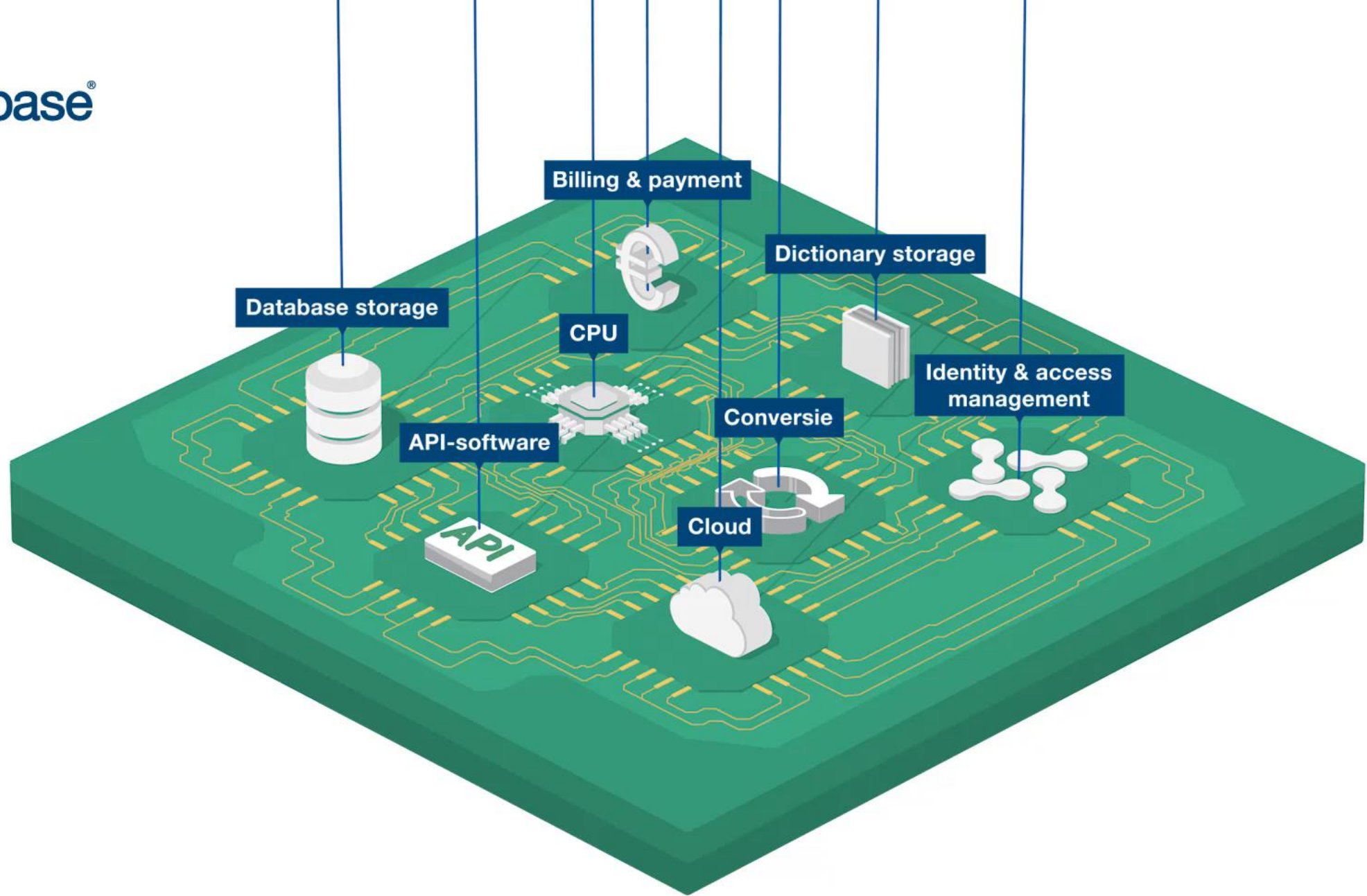


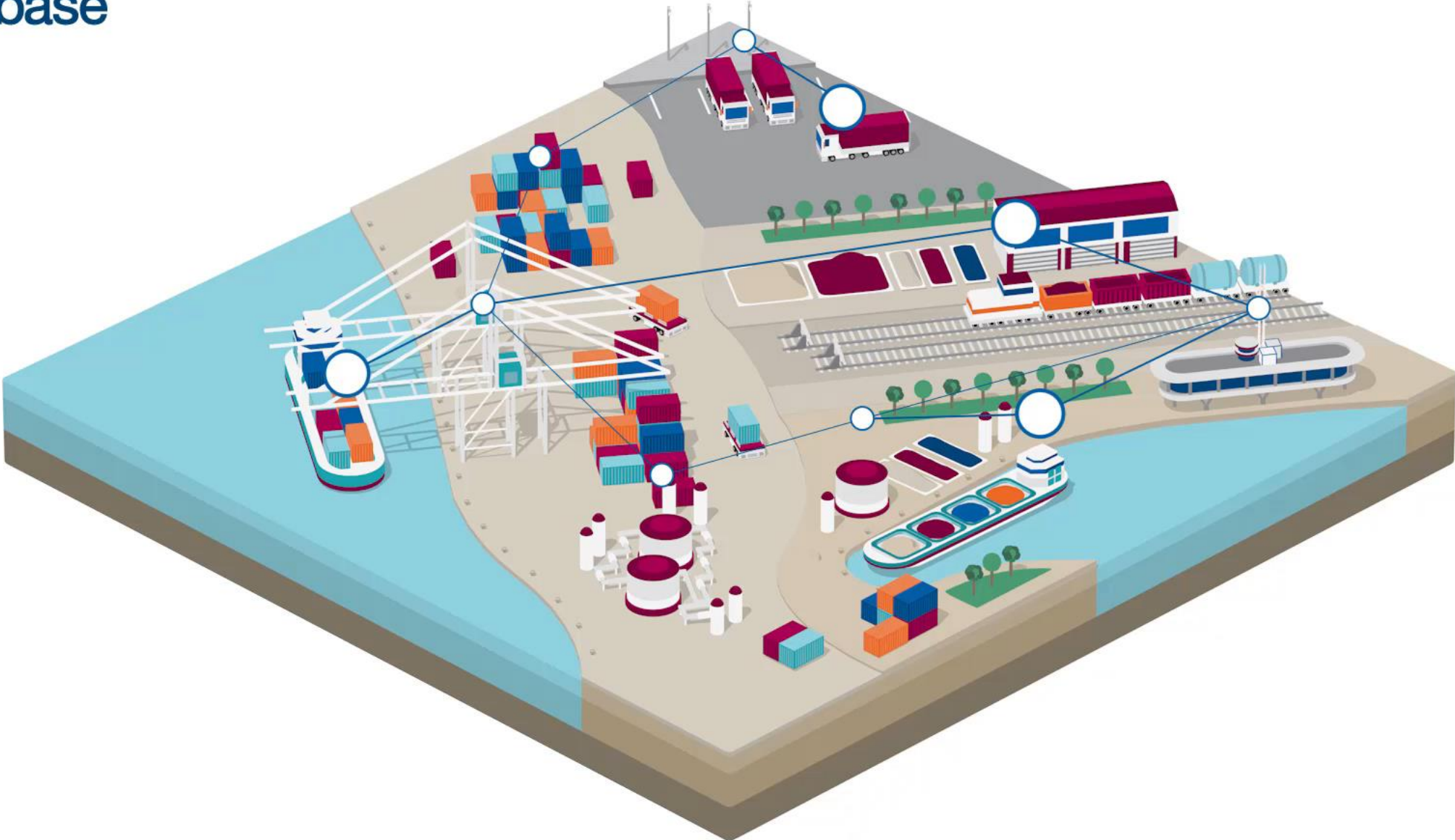


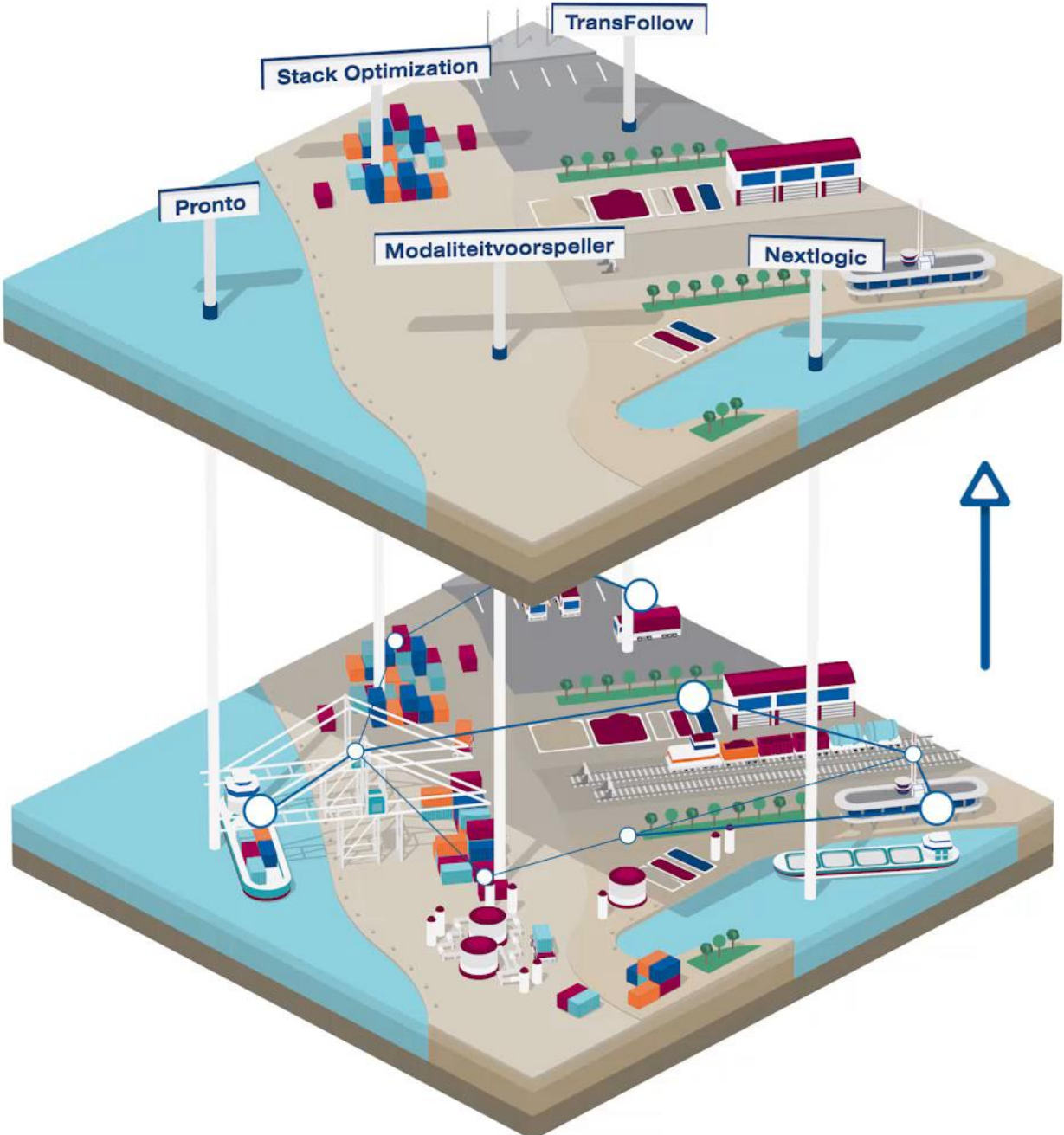
portbase®

Integration
services

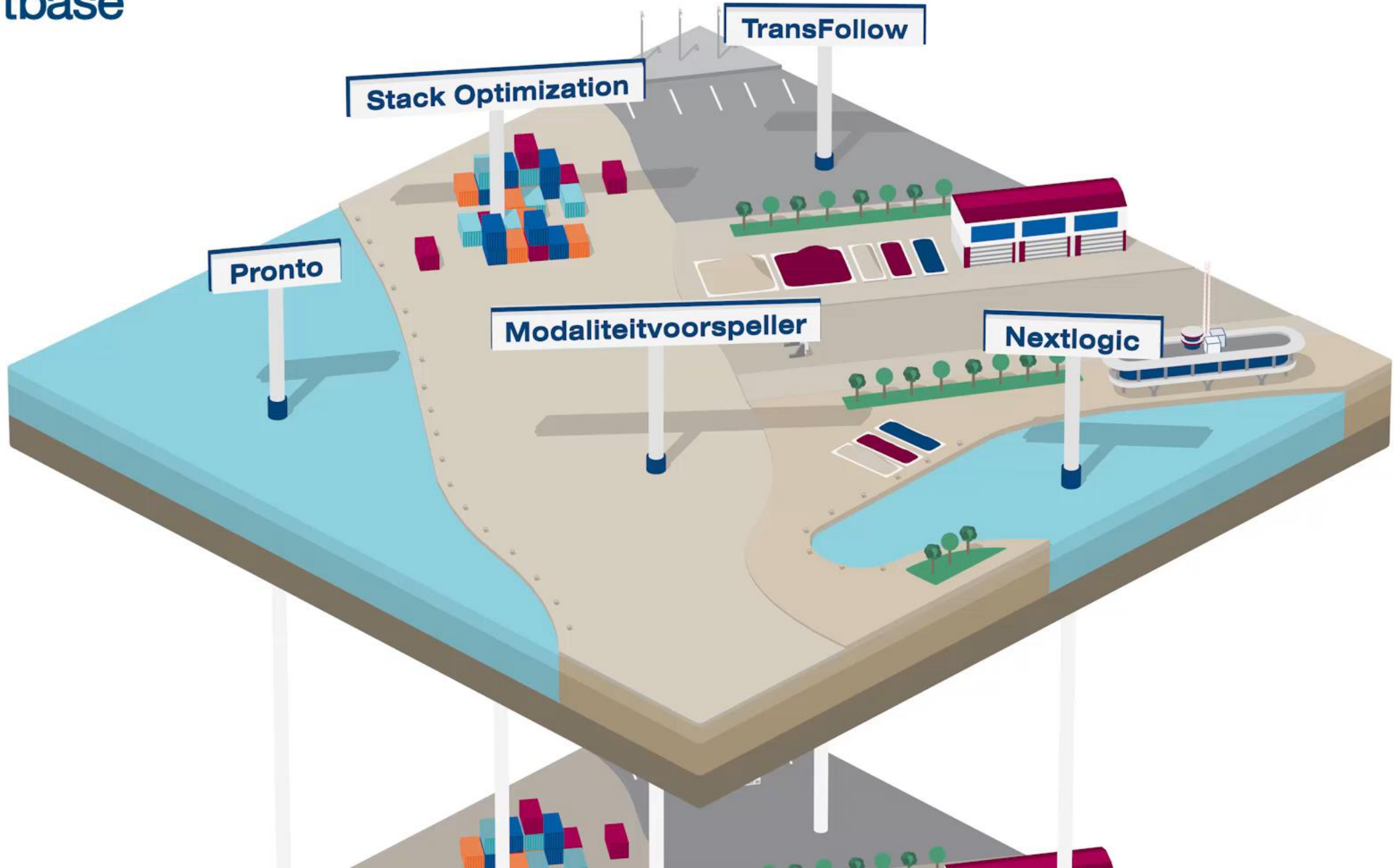


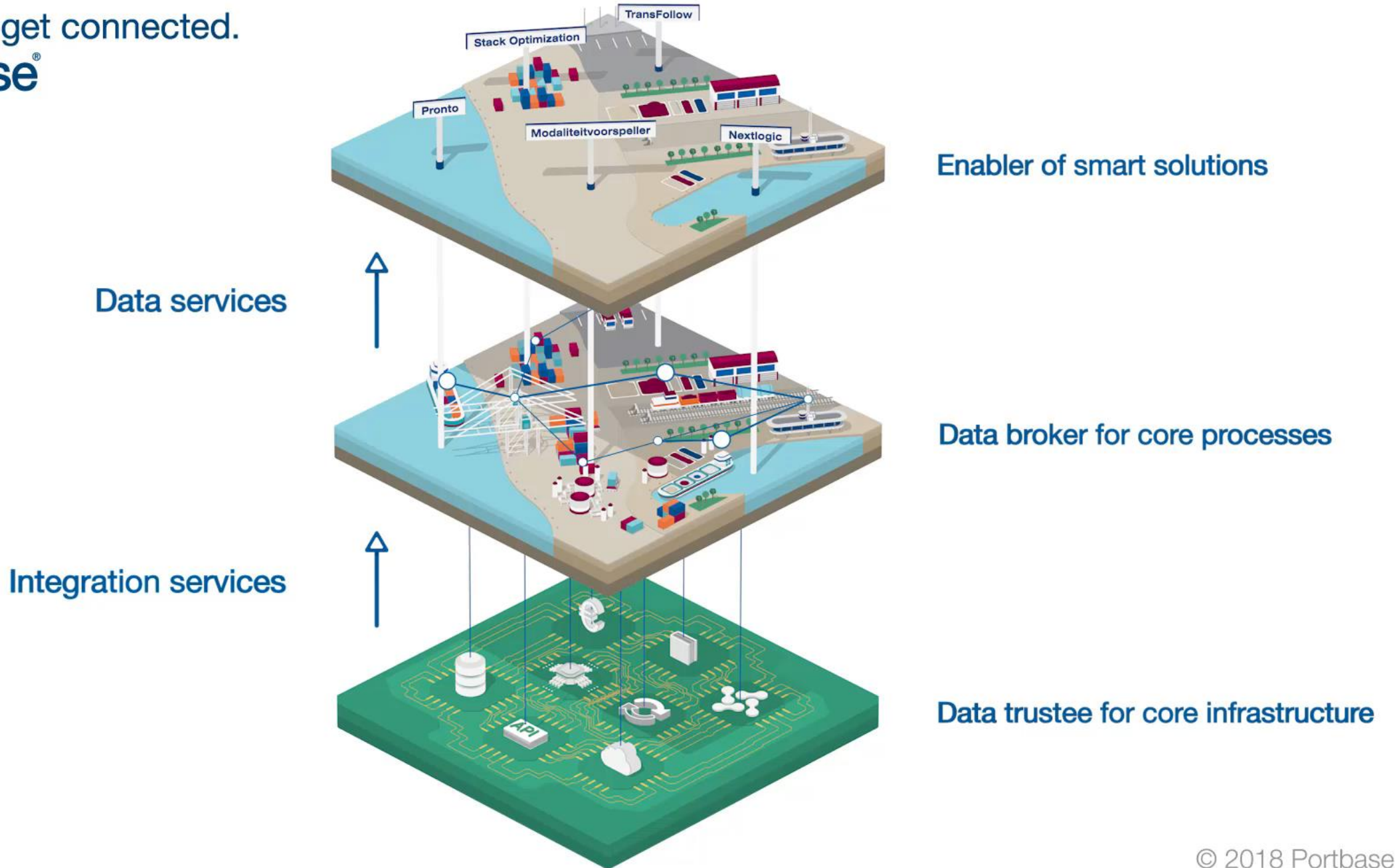






Data services





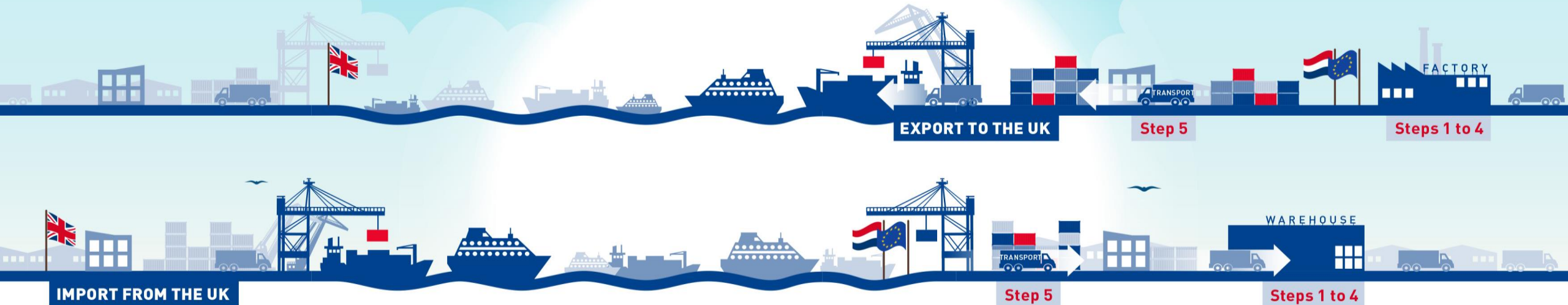


Ready for Brexit in the Dutch ports in 5 steps



GET READY FOR BREXIT

Swiftly through the Dutch ports



IMPORTER EXPORTER CUSTOMS



Step 1. Register with Customs

No relationship with Customs yet? Create an EORI number at Customs as soon as possible.

IMPORTER EXPORTER FORWARDER CUSTOMS AGENT CUSTOMS



Step 2. Decide who takes care of the import and export declarations

Will you submit your own declarations to Customs or will you use a forwarder or customs agent for this?

IMPORTER EXPORTER FORWARDER CUSTOMS AGENT TRANSPORTER PORTBASE



Step 3. Determine who is responsible for the pre-notification of customs documents

After Brexit, pre-notification via Portbase is mandatory at shortsea and ferry terminals. Make clear agreements about who is responsible for this.

IMPORTER EXPORTER FORWARDER CUSTOMS AGENT TRANSPORTER PORTBASE



Step 4. Subscribe to the Portbase services

You can digitally pre-notify and track your cargo in real time via Portbase.

TRANSPORTER PORTBASE



Step 5. Check beforehand whether the terminal has the customs documents

Only cargo that has been digitally pre-notified via Portbase can enter and leave the terminal. No transport without document.

Everything is connected.....



Thank you!